

MOVEMENT
— MILITARY —

FORT CAMPBELL

RELOCATION GUIDE

Everything you need to know for a stress-free PCS



Powered by Movement Mortgage

A proud partner of the USO





WELCOME TO FORT CAMPBELL

Welcome to Fort Campbell – a Tennessee/Kentucky border crossing community beloved by its residents and proud to offer the “Best Soldier and Family Experience.” Whether this is your first big military move or your next stop on tour, you and your family will feel right at home in this friendly southern destination.

The Fort Campbell lifestyle offers the best of both worlds when it comes to city and country living. Here, you’ll have access to many modern amenities while still being able to experience small-town charm – all while surrounded by breathtaking rolling hills and pastoral landscapes.

Wholesome farm-to-table eateries, an eclectic Nashville music scene and that famous southern hospitality are only a few of the reasons 70,000+ military retirees have returned to the Fort Campbell area.

Fort Campbell Quick Facts:

- Fort Campbell is located on approximately 102,414 acres of land bridging the Tennessee/Kentucky border
- It is the second-largest military base in the world and supports the fourth largest army population with over 250,532 inhabitants
- The sprawling base spans four counties: Montgomery and Stewart Counties in Tennessee as well as Christian and Trigg Counties in Kentucky
- Fort Campbell was established in 1941 and is named after Union Army Brigadier General William Bowen Campbell

About Fort Campbell

This “Home of the Screaming Eagles” is recognized for having the Army’s one and only 101st Air Assault Division as well as the Sabalauski Air Assault School, famously referred to as the ten toughest days in the army.

Fort Campbell is also home to the 5th Special Forces Group, 160th Special Operations Aviation Regiment, 52nd Ordinance Group (EOD), FRIES/SPIES Master, the 19th Air Support Operations Squadron, 716th MP Battalion, Blanchfield Army Community Hospital, 531st Hospital Center, 101st Sustainment Brigade US Army Garrison Fort Campbell and other units.

PCS SUPPORT

Main Housing Office

(270) 798-3808
2702 Michigan Avenue, Bldg. 2707
Fort Campbell, KY 42223

Army Community Service

(270) 798-9322
William C. Lee Road, Bldg. 1501
Fort Campbell, KY 42223

Relocation Readiness Program

(270) 798-6313
William C. Lee Road, Bldg. 1501
Fort Campbell, KY 42223

Family Advocacy Program

(270) 412-5500
William C. Lee Road, Bldg. 1501
Fort Campbell, KY 42223

Financial Readiness Program

(270) 798-5518
William C. Lee Road, Bldg. 1501
Fort Campbell, KY 42223

COMMUTING

Surrounding Cities and Major Destinations

Given Fort Campbell's convenient central U.S. location and proximity to major nearby cities, residents here have easy access to a variety of transportation options. Clarksville, TN and Hopkinsville, KY are the two largest towns that serve this base while Nashville is a short one-hour drive away.

Average commute times to nearby cities and destinations are between 27 minutes to 4 hours. Given the fact that multiple major cities are within driving distance, there are plenty of convenient, fast and easy travel options including major interstates and state routes to take you wherever you need to go.

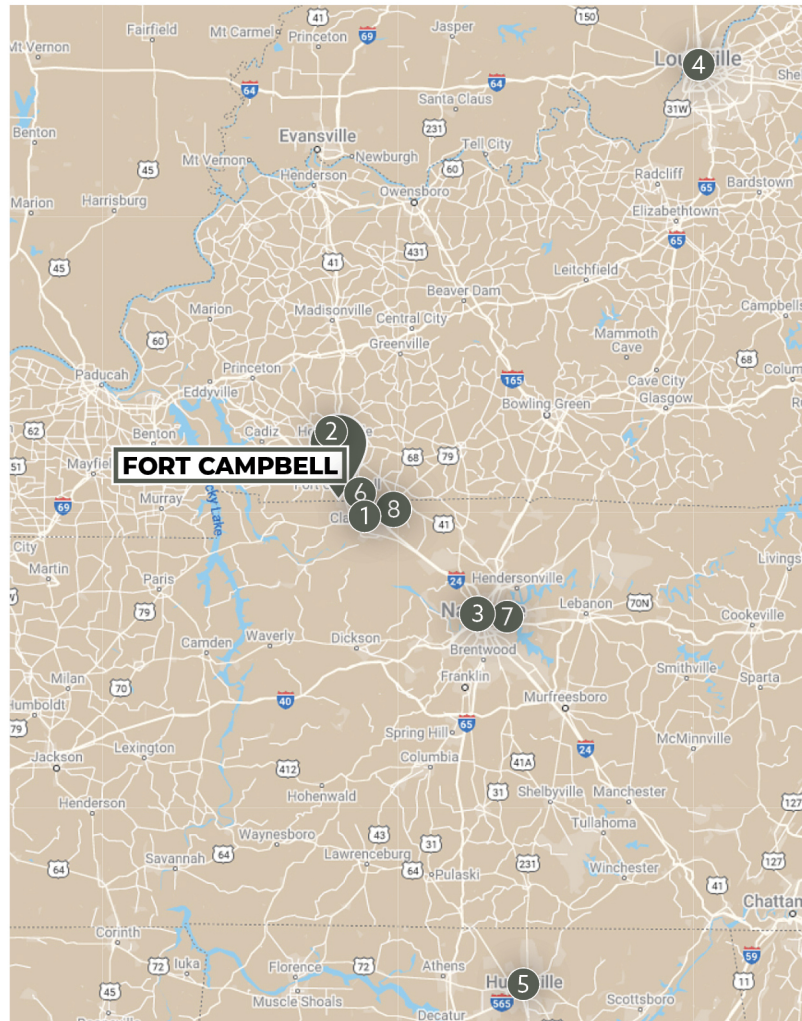
AVERAGE DRIVE TIMES

1. Clarksville, TN - 27 Minutes
2. Hopkinsville, KY - 28 Minutes
3. Nashville, TN - 1 Hour
4. Louisville, KY - 3 Hours
5. Huntsville, AL - 2 Hours 53 Minutes
- St. Louis, MO - 3 Hour 55 Minutes (*No map pin*)
- Memphis, TN - 3 Hours 37 Minutes (*No map pin*)

LOCAL TRAVEL OPTIONS

6. Clarksville Regional Airport - 15 Minutes
7. Nashville International Airport - 1 Hour 15 Minutes
8. Greyhound Bus Station - 32 Minutes
9. Clarksville Transit System (CTS) - 16 Minutes (#1 on map)

NOTE: Commute times are approximate



ATTRACTIONS

Fort Campbell Attractions and Amenities

Whether it's immersing yourself in the thriving music scene, culture and cuisine of Nashville, spending time outdoors exploring beautiful scenery, taking in a game at Austin Peay University or visiting wineries or breweries, Fort Campbell has it all. Anytime you prefer to stay close to home, however, there are plentiful family fun options available to Fort Campbell residents.

What's on Base?

Fort Campbell and the surrounding area offer extensive outdoor and fitness amenities plus shopping, dining and indoor attractions. Choose between several playgrounds, parks, dog parks and town centers for recreation, spend time at the Oak Grove Casino or drive a few miles south for an escape room, roller skating rink and Heritage Park splash pad.

Other on-base amenities include:

- Cole Park Golf Course
- Challenge Course and Indoor Climbing Wall
- Fort Campbell Bowling
- Fort Campbell's Intramural Sports Program
- Fort Campbell Fish and Wildlife
- Skeet & Archery
- Paintball Field
- Fort Campbell Shooting Ranges
- Don F. Pratt Memorial Museum

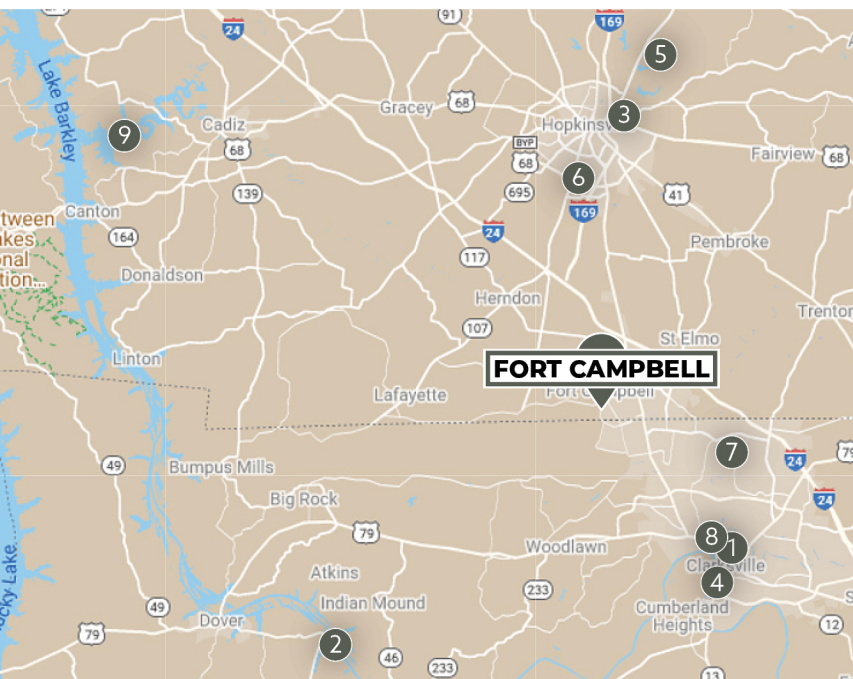
What's Nearby?

No matter which direction you take, the options for family fun abound for off-base excursions. There are water parks perfect for the summer heat and spacious farms for grassroots learning. Musical performances and Cumberland River attractions are all close to every Fort Campbell doorstep. Easily experience the best of Kentucky and Tennessee living while stationed at this favored military assignment.

AVERAGE DRIVE TIMES TO POPULAR ATTRACTIONS

1. Austin Peay State University - 17 Minutes
2. Cross Creeks National Wildlife Refuge - 53 Minutes
3. Western Hills Golf- 22 Minutes
4. Clarksville Marina at Liberty Park - 22 Minutes
5. Amazing Acres Farm - 29 Minutes
6. Tie Breaker Family Aquatic Center - 21 Minutes
7. Clarksville Speedway and Fairgrounds - 14 Minutes
8. Fort Defiance Civil War Park & Interpretive Center - 17 Minutes
9. Lake Barkley State Resort Park - 45 Minutes
10. Country Music Hall of Fame - 1 Hour 9 Minutes
(No map pin)

NOTE: Commute times are approximate



NEIGHBORHOOD SNAPSHOT

Charming neighborhoods, open spaces and convenience to larger city amenities are just a few of the reasons Fort Campbell is beloved by residents. The most difficult part of finding a home here may be which great option to pick. Here are three we recommend looking into for your family.

Oak Grove

Just outside the gates of Fort Campbell on the Kentucky side of the border lies the welcoming community of Oak Grove - the self-proclaimed "Hometown of Fort Campbell."

This charming small town mix of longtime residents and military families is a great choice for those looking off-post but who still want to be within 5-10 minutes from base. If you're seeking a quiet, rural area that is deeply rooted in military pride and has affordable housing, Oak Grove may be the perfect place for you.

Average Price Range:

\$150,000 - \$250,000

Distance to Base:

3.7 miles to Fort Campbell Gate 7

Neighborhood Highlights

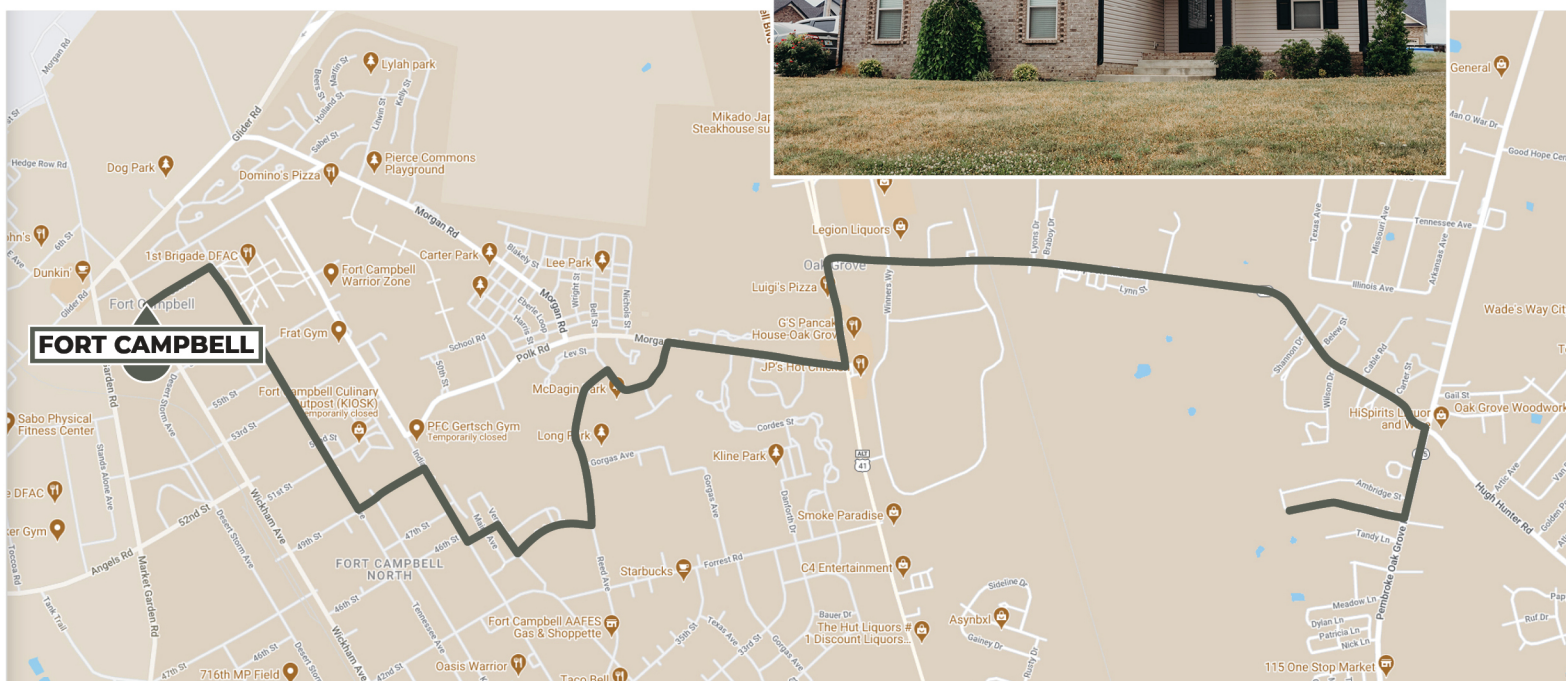
- Healthy mix of military residents and locals
- Proximity to base and easy access to Clarksville and Hopkinsville
- Family-friendly
- Affordable homes

Nearby Schools

- South Christian Elementary School
- Christian County Middle School
- Christian County High School

Things to Consider

Oak Grove will offer you easy access to base and everyday essentials, but you'll have to head out to Clarksville or Hopkinsville for more modern amenities, entertainment and activities. Fortunately, these cities are only a short 20-25 minute drive away.



ROSSVIEW/ST. BETHLEHEM

If you're in the market for more of an active, family-friendly lifestyle with great accessibility to all the modern amenities, look no further than the suburban oasis of Rossville/St. Bethlehem. Located just outside Clarksville around 20 minutes east of base, this popular spot for military families and locals combines city conveniences with easy-going small town charm. This area boasts tight-knit communities in village style neighborhoods with year-round recreational events like holiday barbecues and crawfish boils.

Average Price Range:

\$250,000 - \$450,000

Distance to Base:

15.9 miles to Fort Campbell Gate 7

Neighborhood Highlights

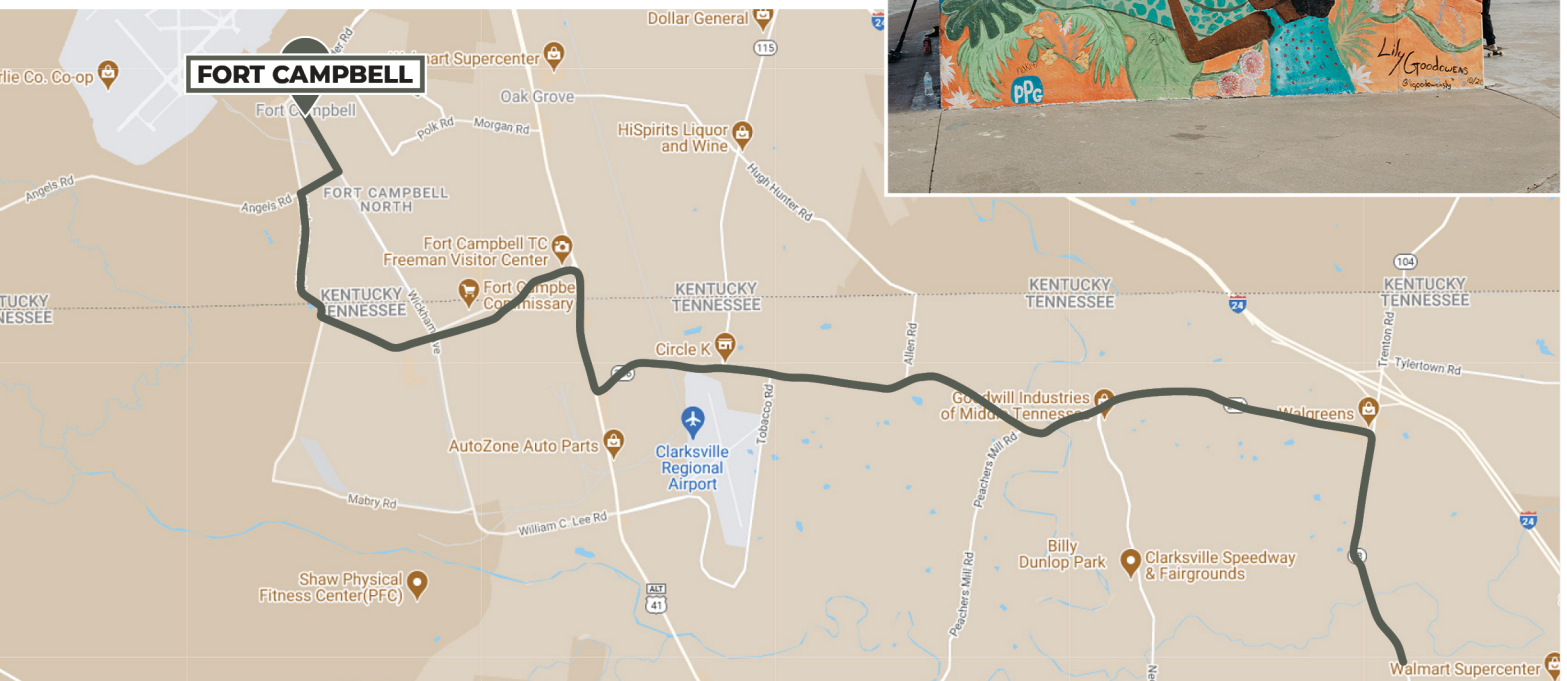
- Family-friendly
- Well-maintained communities
- Proximity to big box stores
- Reputable schools

Nearby Schools

- Rossville Elementary School
- Rossville Middle School
- Rossville High School

Things to Consider

While you'll have a tad longer commute to base, it's a decent trade off being so close to Clarksville and its amenities, shopping and restaurants. If you're looking for a place where southern hospitality shines, you'll know the neighbors and children can play safely in parks and on sidewalks, the Rossville/St. Bethlehem area may be perfect for you. Just know that while there are a lot of affordable homes in this area, you'll likely pay a bit more than you would in nearby rural areas.



WOODLAWN

If you dream of country living, wide open spaces, ranch-style homes and farmhouses on generously sized lots, check out the sprawling, well-established farm community of Woodlawn. Located southwest of Fort Campbell, Woodlawn offers peace and quiet away from the hustle and bustle of city life with no city taxes. If you'd love owning your own acreage or maybe even a horse one day, this is the spot for you.

Average Price Range:

\$250,000 - \$450,000

Distance to Base:

11.2 miles to Fort Campbell Gate 10

Neighborhood Highlights

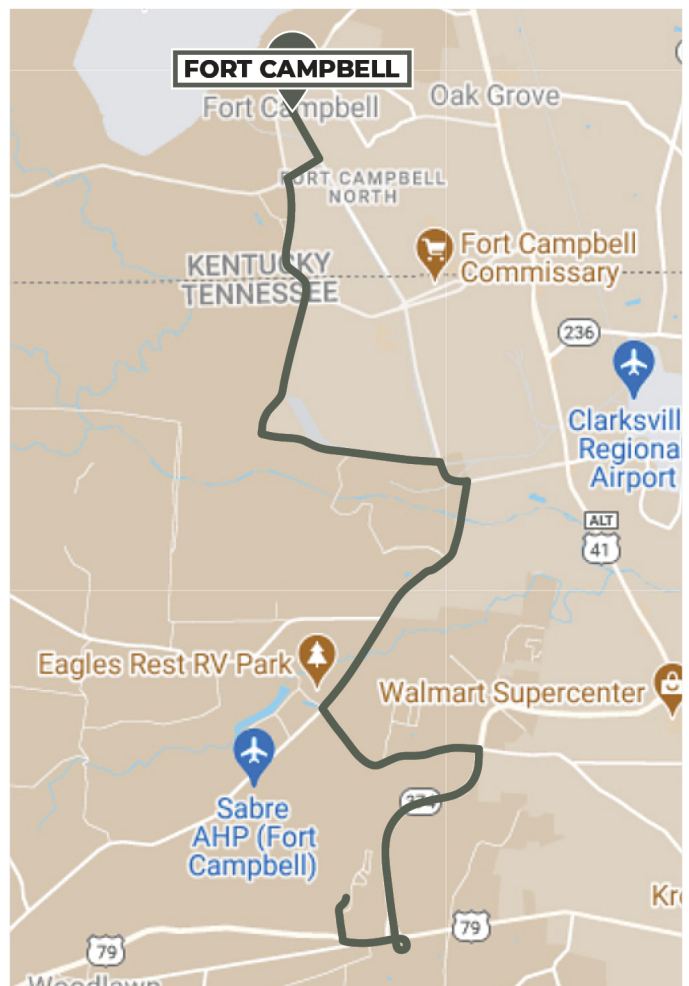
- Established community
- Large lots of land
- No city taxes
- Good schools

Nearby Schools

- Woodlawn Elementary School
- New Providence Middle School
- Northwest High School

Things to Consider

You may have to work (and walk) a little more to get to know your neighbors, but you'll be happy to find friendly farmers and locals - most of which have lived here for generations - as well as military families in this community. While you will certainly enjoy the quiet and solitude of country living out here, it's nice to know you're only a 15-minute drive away from the Fort Campbell western gates as well as 15 minutes outside of Clarksville.



POWERED BY



MOVEMENT MORTGAGE

www.movementmilitary.com

“The appearance of U.S. Department of Defense (DoD) visual information does not imply or constitute DoD endorsement.”



8024 Calvin Hall Rd. Indian Land, SC 29707 | www.movement.com



Movement Mortgage, LLC supports Equal Housing Opportunity. NMLS ID# 39179 (For licensing information, go to: www.nmlsconsumeraccess.org) | 877-314-1499. Movement Mortgage, LLC is licensed by AL # 21022, AK # AK39179, AZ # 0918544, AR # 105002, “CA Department of Financial Protection & Innovation (DFPI) under the California Residential Mortgage Lending Act” # 4131054, CO # 39179, CT # ML-39179, DE # 012644, D.C. # MLB39179, FL # MLD1360, GA # 23002, HI # HI-39179 & MS205, ID # MBL-8027 & RRL-9397, IL # MB.6760898, IN # 18121, IA # 2013-0023 & 88883410, KS# MC.0025343, KY # MC85066, LA, ME # 39179, MD # 39179, MA Broker & Lender # MC39179, MI # FRO021343 & SRO020189, MN # MN-MO-39179, MS# 39179, MO # 39179, MT # 39179, NE, NV # 3401, NH # 20985-MB, Licensed by the N.J. Department of Banking and Insurance, NM, Licensed Mortgage Banker-NYS Department of Financial Services # LMB0 108773, NC # L-142670, ND # MB103223, OH # RM.804187.000, OK # ML002646, OR # ML-5081 & MS-37, PA # 34374, Rhode Island Licensed Lender, Broker and Servicer 20153194LL & 20153195LB & 20153196LS, SC # MLS - 39179, SD # 39179, ML, TN # 112748, TX, UT # 7773921, VT # 6862, 39179-1 & 1288 MB, VA # MC-5112, WA # CL-39179, WI # 39179BA & 39179BR, WV # MB-32019 & ML-32020, WY # 3104 & CL-3790. Interest rates and products are subject to change without notice and may or may not be available at the time of loan commitment or lock-in. Borrowers must qualify at closing for all benefits. “Movement Mortgage” is a registered trademark of the Movement Mortgage, LLC, a Delaware limited liability company. 8024 Calvin Hall Rd, Indian Land, SC 29707.

PID 11264-1-3 | AO1223